



Washington County

- MAGNESIUM CHLORIDE STORAGE/CONTAINMENT AREA
- NEW SNOW & ICE EQUIPMENT

10/29/2020

Land Use & Transportation

co.washington.or.us



Walnut Street Center - Site Construction

- Built in 1999
- Anti-icing agents were not in use at that time by county crews
- No provisions for the new building to accommodate bulk storage of anti-icing material
- No plans for future development of the site for bulk storage of anti-icing material



Initial Use of an Anti-Icing Agent

Shortly after the Walnut Street Center opened, one 6000 gallon tank was installed with a pump and plumbing to use Calcium Magnesium Acetate (CMA) as an anti-icing agent on county roads.



Use of Anti-Icing Agent (15 years ago)

Problems associated with use of CMA were:

- Less effective than Mag. Chloride
- More expensive
- Problematic to store and utilize



Use of Anti-Icing Agent (10 years ago)

- Use of Mag. Chloride expanded.
- Other agencies in the area also expanded use.
- Added capacity with another 9000 gallon tank.



Previous Mag. Chloride Storage Facility





Demolition/Site Preparation/Utility Work





Construction





Construction





New (2020) Mag. Chloride Storage Facility





New (2020) Mag. Chloride Storage Facility





New (2020) Mag. Chloride Storage Facility





New (2020) Mag. Chloride Storage Facility





New (2020) Mag. Chloride Storage Facility



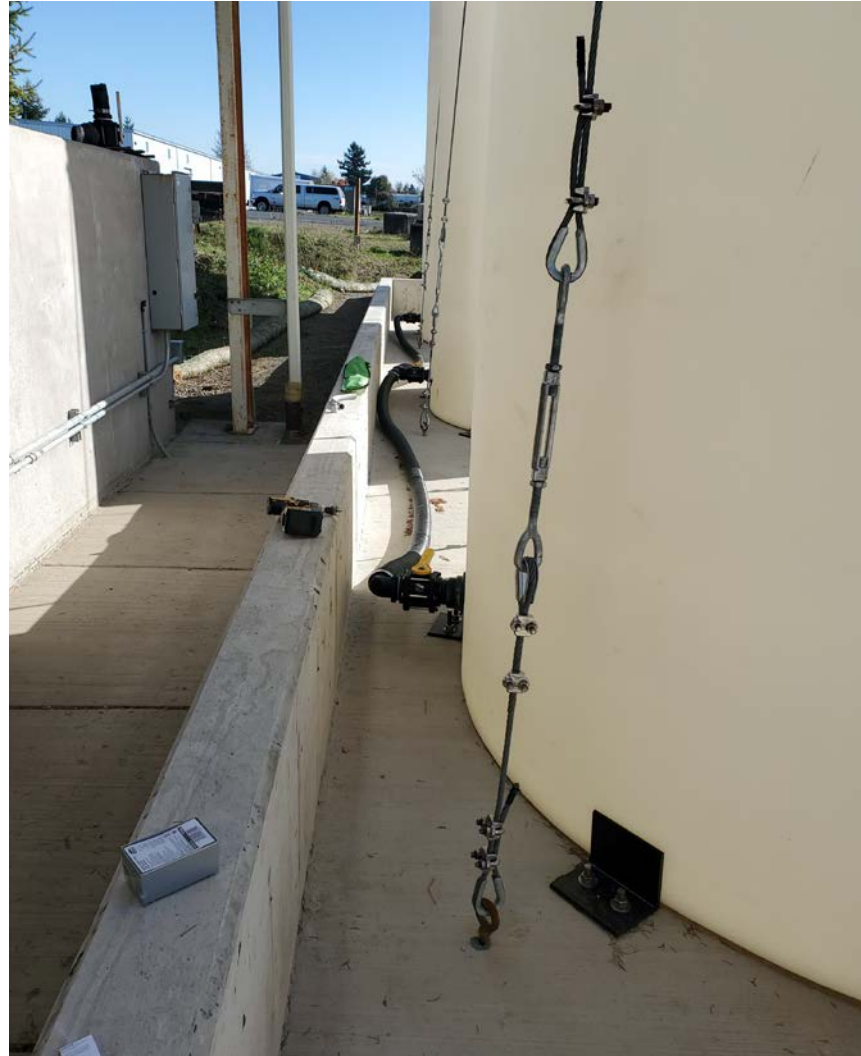


New (2020) Mag. Chloride Storage Facility





New (2020) Mag. Chloride Storage Facility





New (2020) Mag. Chloride Storage Facility





New (2020) Mag. Chloride Storage Facility





New Dump Truck Specifications

- Frame rails and frame extensions had to allow for plow attachments
- Costly additions to trucks after initial purchase



New 2020 International Dump Trucks





New 2020 International Dump Trucks





New 2020 International Dump Trucks

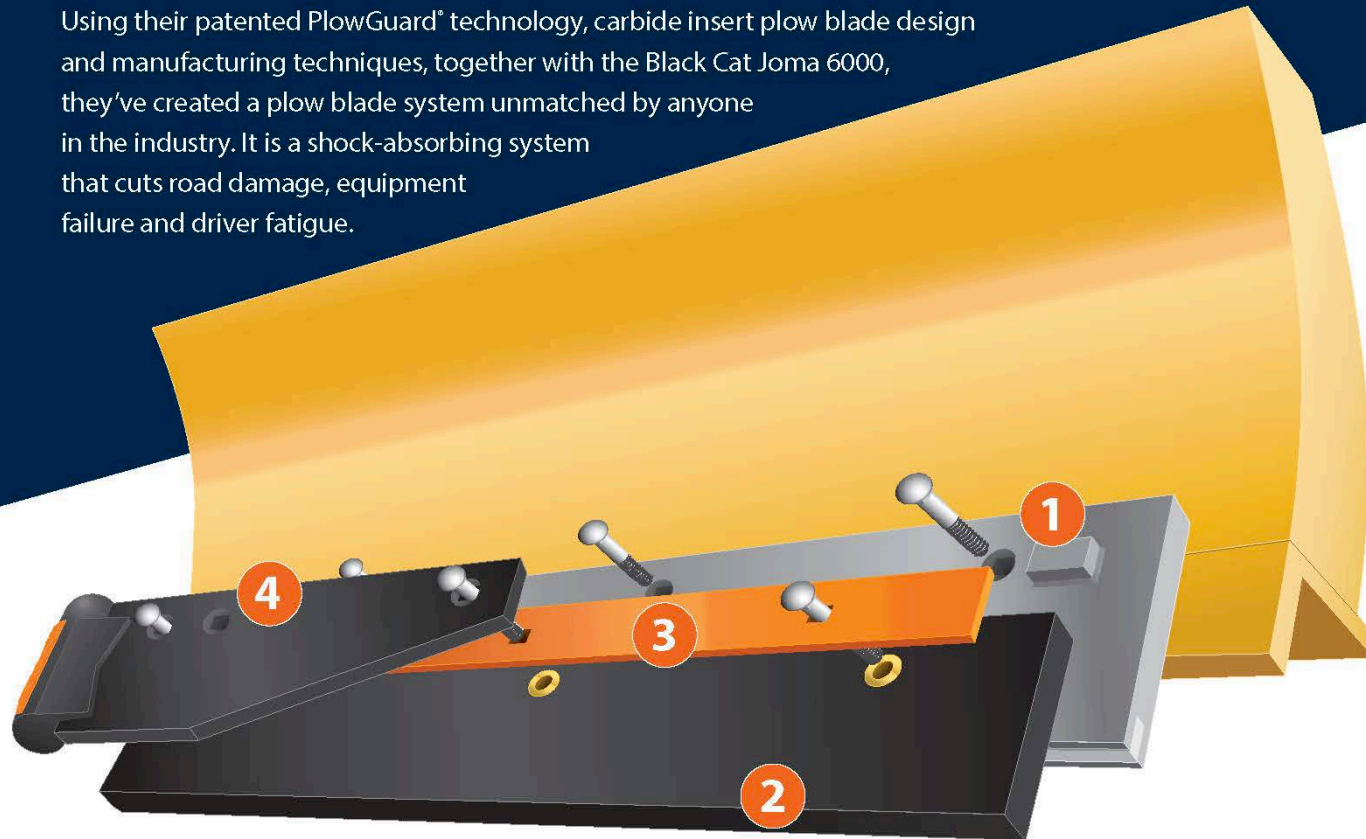




Joma Plow Blades

JOMA™ BLADE SYSTEM EXPLAINED

The Winter Equipment Company has engineered a revolutionary snowplowing system. Using their patented PlowGuard® technology, carbide insert plow blade design and manufacturing techniques, together with the Black Cat Joma 6000, they've created a plow blade system unmatched by anyone in the industry. It is a shock-absorbing system that cuts road damage, equipment failure and driver fatigue.





Serrated Steel Plow Blades

WINTER
Steel Snowplow Blade System
PATRIOT® System
Hardcore blade with superior cutting power!



Patriot® is built to last 4x longer with its 3/4" x 6" steel blade — we guarantee it.





Key Improvements to Facility & Equipment

- Increased storage capacity for carrying through material shortages during winter operations, while also assisting other local agencies to share anti-icing product.
- Containment area for Mag. Chloride storage was brought up to current standards.
- Safer and more efficient equipment deployment with drive-up plows.
- New Dump Trucks were spec'd with frame rails and heavy duty axles and tires to handle the added weight of the plow.
- Utilize new technology for plow blades for better efficiencies in ice and hard packed snow removal.



Equipment Summary

- 6 – Full sized dump trucks equipped with plows and sanders
- 4 – Ford F 450 flatbed trucks equipped with plows and sanders
- 3 – Caterpillar road graders
- 2 – 1500 gallon capacity anti-icer tanks for transfer (dump) trucks
- 2 – 750 gallon capacity anti-icer tanks for platform/shuttle body trucks*
- 1 – Under tailgate spinner sander unit for platform/shuttle body trucks
- 1 – Epoke drop sander unit for platform/shuttle body trucks



WC-ROADS.COM



WC-ROADS

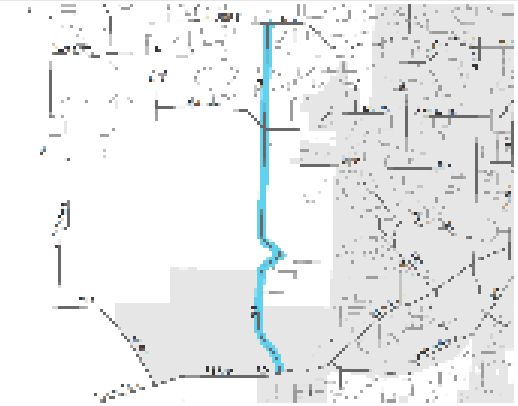
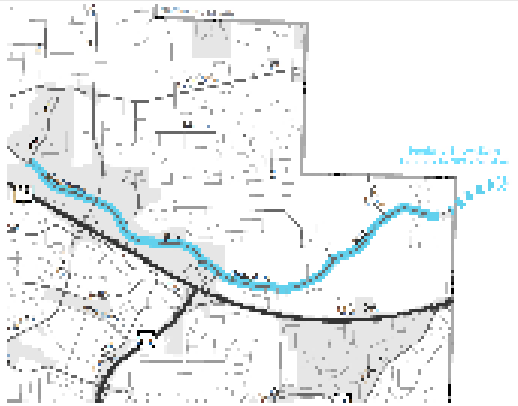
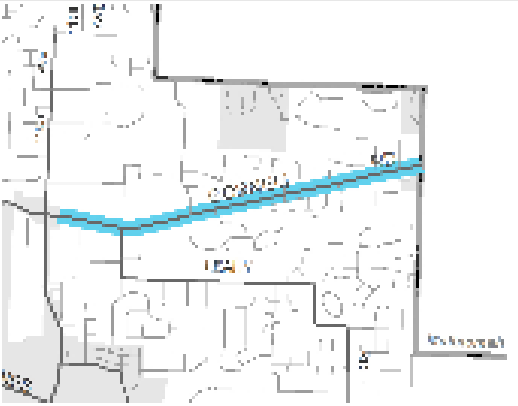


Snow Zones

- Locations are the same as they were last season
- Same verbiage to last year
- Addition of “WHEN FLASHING”



Snow Zones

 A map showing a vertical blue line representing 175th Avenue. The area to the left of the line is shaded light gray, indicating the snow zone. The map includes street names and a north arrow.	 A map showing a blue line representing Barnes Road. The area to the left of the line is shaded light gray, indicating the snow zone. The map includes street names and a north arrow.	 A map showing a blue line representing Cornell Road. The area to the left of the line is shaded light gray, indicating the snow zone. The map includes street names and a north arrow.
<p><u>175th Avenue</u> Between Scholls Ferry and Rigert roads</p>	<p><u>Barnes Road</u> 118th Avenue to the County line</p>	<p><u>Cornell Road</u> Cedar Hills Blvd. to the County line</p>

SNOW ZONE

CHAINS REQUIRED
**• TRACTION TIRES
ALLOWED ON VEHICLES
UNDER 10,000 GVW**

WHEN FLASHING

